

LED-CONN

LED-CONN has the same specifications as LED-CONN LIMITLESS. Tailored to individual lengths, this connector can be optimally used for feedthroughs and connections between two LED strips.

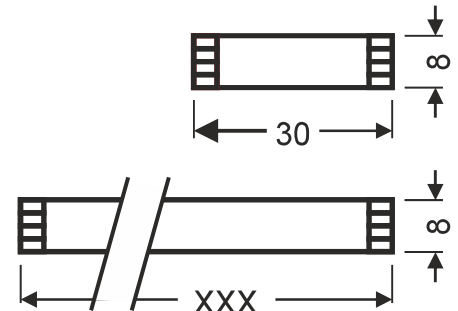


Package:

- Sold by the meter on a roll

Advantages:

- Tool-free installation with connectors
- alternatively solderable
- Very flat profile for inconspicuous and exact installation
- Foldable, flexible and resistant



Color of insulation:

- brilliant white
- concrete transparent

Characteristics, approvals, approbations

- Ratet voltage: 25 V
- Insulation resistance: min. 10 GΩ/km
- Operating Temperature: -40°C bis +105°C
- Flammability acc. to DIN 75200: SE =self extinguishing
- behaviour u. flame app. acc. to EN DIN 13501-6:2019-05: Eca
- RoHS/REACH-compliant

Dimensions

Conductors	2	4
Width of cable	8 mm	
Insulation thickness	0,1 mm	
Width of edge	0,45 mm	
Cable length	100 mm	
Pitch	3,8 mm	1,9 mm
Width of conductor	3,3 mm	1,4 mm
Thickness of conductor	0,1 mm	
Cross section	0,33 mm ²	0,14 mm ²
Thickness of cable	0,3 mm	
Current load*	6 A	2 A

*see. VDE0891-1

Conductor end design

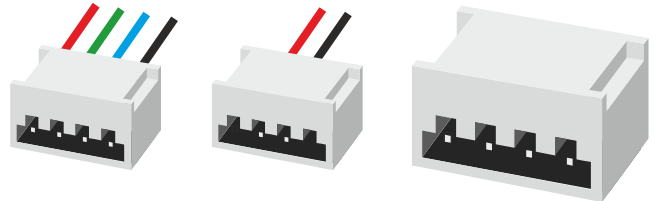
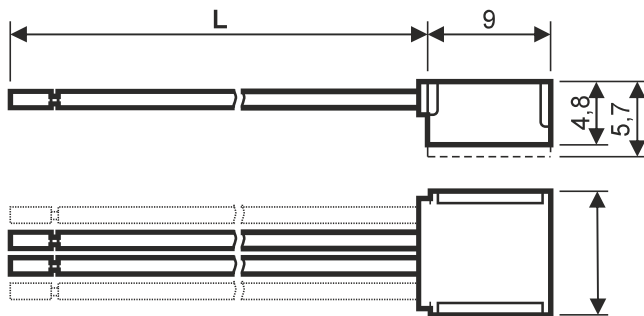
Optimized for Connectors see accessories	Upper side stripped	4,0 mm	
SMT-soldering	Stripped flat end	3,0 mm	

* Special pin length on request

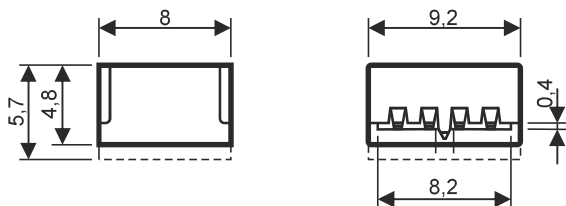


LED-CONN ACCESSOIRES

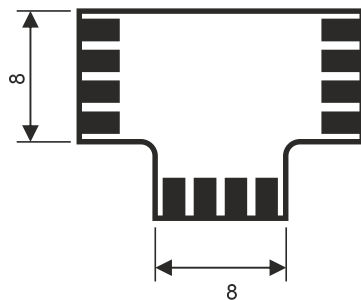
1. Infeed (round to flat)
2. Picker (flat to round)



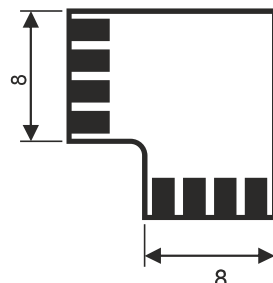
3. Connector Strip - Strip (flat to flat)



4. T-Connector
Use LED-CONN as a busbar



5. L-Connector
Corner connection 90°



Technical specifications

Volatge	< 25 V
Max. total current per connector, depending on LED circuit board	10 A
current capacity, max. per pin	
2-pole:	5 A
4-pole:	5 A / 1,67 A
Ambient temperature, operation	-30 bis +70°C
Based on	IEC 60838-2-2
Cross section	AWG 22
Insulation material	PBT GF
Inflammability class acc. to UI94:	V0

